

MEC DIESEL



**TIPO MOTORE 4P10
MITSUBISHI FUSO 3.0 HDI 16V**

**ENGINE TYPE 4P10
MITSUBISHI FUSO 3.0 HDI 16V**

>> APPUNTAMENTO CON IL MOTORE <<
RENDEZVOUS WITH THE ENGINE

MEC DIESEL

Appuntamento con il motore - .08 tipo motore 4P10 Mitsubishi FUSO 3.0 HDI
 Rendezvous with the engine - .08 4P10 engine type Mitsubishi FUSO 3.0 HDI

MOTORI COMPLETI

TIPO MOTORE 4P10 MITSUBISHI FUSO 3.0 HDI 16V

Engine type 4P10 ready for shipping • Type de moteur 4P10 en stock
 Motores tipo 4P10 en stock • Motoren des Typs 4P10 bereit zur Auslieferung



| MEC REF | DESCRIZIONE - Description | | | |
|---------|--|-----------------------------------|----------------------------|--------------------------------|
| 70492 | FUSO 3.0 HPI - FICE3481V*D303 / 4P10 - D | senza volano w/o flywheel | turbocharger 5801951700 | injector nozzles 5801540211 |
| 70491 | FUSO 3.0 HPI - FICE3481V*D403 / 4P10 - D | senza volano w/o flywheel | turbocharger 5802355023 | injector nozzles 5801540211 |
| 70490E | FUSO 3.0 HPI - FICE3481Z*D303 / 4P10 - D | senza volano w/o flywheel | turbocharger 5802355023 | injector nozzles 5801540211 |
| 70446 | FUSO 3.0 HPI - FICFL4114*H033 / 4P10 - E | senza volano w/o flywheel | turbocharger 5802355023 | injector nozzles 5801644454 |
| 70328 | FUSO 3.0 HPI - FICFL4114*H034 / 4P10 - E | senza volano w/o flywheel | turbocharger 5802355023 | injector nozzles 5801644454 |
| 75128 | FUSO 3.0 HPI - FICFL411A*G008 / 4P10 - D | 📷 senza volano w/o flywheel | turbocharger 5801951700 | injector nozzles 5801540211 |
| 76599E | FUSO 3.0 HPI - FICFL411Y*G008 / 4P10 - E | senza volano w/o flywheel | turbocharger 5802355023 | injector nozzles 5801540211 |
| 70299 | FUSO 3.0 HPI - FICGL411F*M023 / 4P10 - E | senza volano w/o flywheel | turbocharger 5802355023 | injector nozzles 5801644454 |
| 70336 | FUSO 3.0 HPI - FICGL411F*M024 / 4P10 - E | senza volano w/o flywheel | turbocharger 5802355023 | injector nozzles 5801644454 |

MEC DIESEL

Appuntamento con il motore - .08 tipo motore 4P10 Mitsubishi FUSO 3.0 HDI
Rendezvous with the engine - .08 4P10 engine type Mitsubishi FUSO 3.0 HDI

90178

CROSS REF:

motore semicompleto
longblock

OE Quality **PRODUCT**
Mec-Diesel **BOX**



APPLICATION FUSO 3.0 HPI - F1CFL411 / 4P10

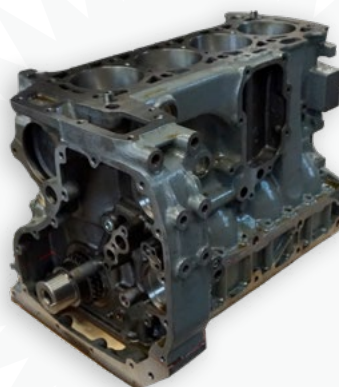
DETAILS *senza distribuzione - without timing chain*

81970

CROSS REF:

motore alleggerito
shortblock

Mec-Diesel **PRODUCT**
Mec-Diesel **BOX**



APPLICATION FUSO 3.0 HPI - F1CE3481 / 4P10
EURO 5

DETAILS

80620

CROSS REF:

motore alleggerito
shortblock

Mec-Diesel **PRODUCT**
Mec-Diesel **BOX**



APPLICATION FUSO 3.0 HPI - F1CFL411 / 4P10
EURO 5/6

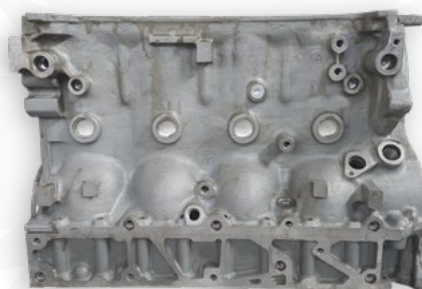
DETAILS

30080
QC000566

CROSS REF:
5801504613

monoblocco
crankcase

Mec-Diesel **PRODUCT**
Mec-Diesel **BOX**



APPLICATION FUSO 3.0 HPI - F1CFL411 / 4P10
EURO 5/6

DETAILS

MEC DIESEL

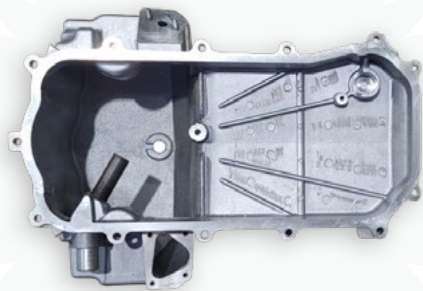
Appuntamento con il motore - .08 tipo motore 4P10 Mitsubishi FUSO 3.0 HDI
Rendezvous with the engine - .08 4P10 engine type Mitsubishi FUSO 3.0 HDI

191086

CROSS REF:
5801883303

coppa olio
oil sump

OE Quality **PRODUCT**
Mec-Diesel **BOX**



APPLICATION

FUSO 3.0 HPI - F1CFL411 / 4P10
EURO 5/6

DETAILS

numero fusione - casting number 5801383293
con alloggiamento sensore olio - with oil sensor
socket

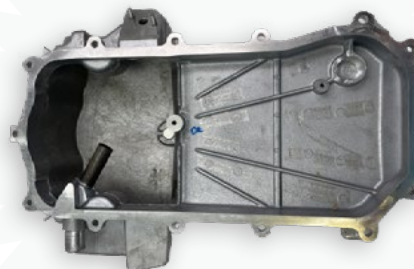
191080

CROSS REF:
5801384509

QC000459C

coppa olio
oil sump

OE Quality **PRODUCT**
Mec-Diesel **BOX**



APPLICATION

FUSO 3.0 HPI - F1CFL411 / 4P10
EURO 5/6

DETAILS

senza alloggiamento sensore olio - without oil
sensor socket

910205

CROSS REF:
504371268

QC000230

guarnizione coppa olio
oil sump gasket

Iveco **PRODUCT**
Iveco **BOX**



APPLICATION

FUSO 3.0 HPI - F1CE3481 / F1CFL411 / 4P10
EURO 5/6

DETAILS

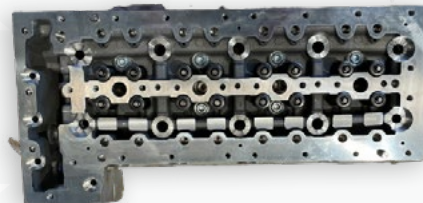
101250

CROSS REF:
5802114243

QC000475

testata
cylinder head

OE Quality **PRODUCT**
Mec-Diesel **BOX**



APPLICATION

FUSO 3.0 HPI - F1CFL411 / 4P10
EURO 5/6

DETAILS

con valvole - with valves

MEC DIESEL

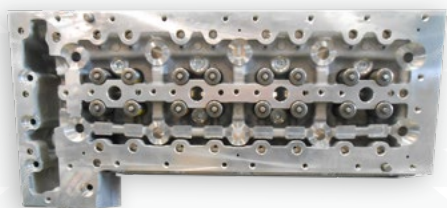
Appuntamento con il motore - .08 tipo motore 4P10 Mitsubishi FUSO 3.0 HDI
Rendezvous with the engine - .08 4P10 engine type Mitsubishi FUSO 3.0 HDI

101390 MK667922

testata
cylinder head

CROSS REF:
[504384837](#)

OE Quality **PRODUCT**
Mec-Diesel **BOX**



APPLICATION

FUSO 3.0 HPI - FICE3481 / 4P10
EURO 5

DETAILS

con valvole - with valves

12000 QC000748

albero a gomiti
crankshaft

CROSS REF:
[5802744606](#)

Mec-Diesel **PRODUCT**
Mec-Diesel **BOX**



APPLICATION

FUSO 3.0 HPI - FICE3481 / FICFL411 / 4P10
EURO 5/6

DETAILS

41002 MK667806

biella
connecting rod

CROSS REF:
[504341496](#)

Mec-Diesel **PRODUCT**
Mec-Diesel **BOX**



APPLICATION

FUSO 3.0 HPI - FICE3481 / FICFL411 / 4P10
EURO 5/6

DETAILS

163030 QC000088

kit cuscinetto albero a gomiti
crankshaft bushing kit

CROSS REF:
[500054637](#)

Iveco **PRODUCT**
Iveco **BOX**



APPLICATION

FUSO 3.0 HPI - FICE3481 / FICFL411 / 4P10
EURO 5/6

DETAILS

standard

MEC DIESEL

Appuntamento con il motore - .08 tipo motore 4P10 Mitsubishi FUSO 3.0 HDI
Rendezvous with the engine - .08 4P10 engine type Mitsubishi FUSO 3.0 HDI

163031 QC000089

kit cuscinetto albero a gomiti
crankshaft bushing kit

CROSS REF:
[500054638](#)

Iveco **PRODUCT**
Iveco **BOX**



APPLICATION FUSO 3.0 HPI - FICE3481 / FICFL411 / 4P10
EURO 5/6

DETAILS *maggiorato - oversize +0,25*

163032 QC000090

kit cuscinetto albero a gomiti
crankshaft bushing kit

CROSS REF:
[500054639](#)

Iveco **PRODUCT**
Iveco **BOX**



APPLICATION FUSO 3.0 HPI - FICE3481 / FICFL411 / 4P10
EURO 5/6

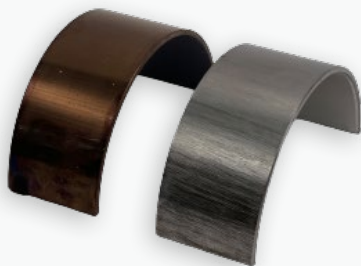
DETAILS *maggiorato - oversize +0,50*

163000 QC000737

bronzina di biella
con rod bearing kit

CROSS REF:
[500086791](#)

Iveco **PRODUCT**
Iveco **BOX**



APPLICATION FUSO 3.0 HPI - FICE3481 / FICFL411 / 4P10
EURO 5/6

DETAILS

843070 QC000088

kit cuscinetto albero a gomiti
crankshaft bushing kit

CROSS REF:
[500054637](#)

Mec-Diesel **PRODUCT**
Mec-Diesel **BOX**



APPLICATION FUSO 3.0 HPI - FICE3481 / FICFL411 / 4P10
EURO 5/6

DETAILS *standard*

MEC DIESEL

Appuntamento con il motore - .08 tipo motore 4P10 Mitsubishi FUSO 3.0 HDI
Rendezvous with the engine - .08 4P10 engine type Mitsubishi FUSO 3.0 HDI

843071 QC000089

kit cuscinetto albero a gomiti
crankshaft bushing kit

Mec-Diesel **PRODUCT**
Mec-Diesel **BOX**

CROSS REF:
[500054638](#)



APPLICATION

FUSO 3.0 HPI - FICE3481 / FICFL411 / 4P10
EURO 5/6

DETAILS

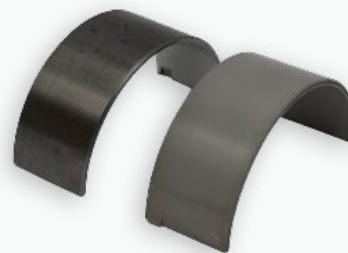
maggiorato - oversize +0,25

843060 QC000737

bronzina di biella
con rod bearing kit

Mec-Diesel **PRODUCT**
Mec-Diesel **BOX**

CROSS REF:
[500054641](#)



APPLICATION

FUSO 3.0 HPI - FICE3481 / FICFL411 / 4P10
EURO 5/6

DETAILS

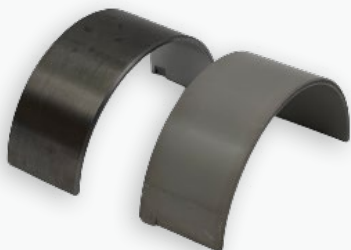
standard

843061 QC000738

bronzina di biella
con rod bearing kit

Mec-Diesel **PRODUCT**
Mec-Diesel **BOX**

CROSS REF:
[2996628](#)



APPLICATION

FUSO 3.0 HPI - FICE3481 / FICFL411 / 4P10
EURO 5/6

DETAILS

maggiorato - oversize +0,25

843062M QC000739

bronzina di biella
con rod bearing kit

Mec-Diesel **PRODUCT**
Mec-Diesel **BOX**

CROSS REF:
[2996665](#)



APPLICATION

FUSO 3.0 HPI - FICE3481 / FICFL411 / 4P10
EURO 5/6

DETAILS

maggiorato - oversize +0,50

MEC DIESEL

Appuntamento con il motore - .08 tipo motore 4P10 Mitsubishi FUSO 3.0 HDI
Rendezvous with the engine - .08 4P10 engine type Mitsubishi FUSO 3.0 HDI

123160 QC000449

pistone
piston

CROSS REF:
[500055727](#)

Iveco **PRODUCT**
Iveco **BOX**



APPLICATION FUSO 3.0 HPI - FICE3481 / FICFL411 / 4P10
EURO 5/6

DETAILS alesaggio - bore D.95,8

123164 QC000306

pistone
piston

CROSS REF:
[500054560](#)

Iveco **PRODUCT**
Iveco **BOX**



APPLICATION FUSO 3.0 HPI - FICE3481 / FICFL411 / 4P10
EURO 5/6

DETAILS alesaggio - bore D.96,2

852550 QC000449

pistone
piston

CROSS REF:
[2996894](#)

Mec-Diesel **PRODUCT**
Mec-Diesel **BOX**



APPLICATION FUSO 3.0 HPI - FICE3481 / FICFL411 / 4P10
EURO 5/6

DETAILS alesaggio - bore D.95,8

852550M QC000449

pistone
piston

CROSS REF:
[2996894](#)

Mec-Diesel **PRODUCT**
Mec-Diesel **BOX**



APPLICATION FUSO 3.0 HPI - FICE3481 / FICFL411 / 4P10
EURO 5/6

DETAILS alesaggio - bore D.95,8

MEC DIESEL

Appuntamento con il motore - .08 tipo motore 4P10 Mitsubishi FUSO 3.0 HDI
Rendezvous with the engine - .08 4P10 engine type Mitsubishi FUSO 3.0 HDI

852554 QC000306

pistone
piston

CROSS REF:
[500054560](#)

Mec-Diesel **PRODUCT**
Mec-Diesel **BOX**



APPLICATION FUSO 3.0 HPI - FICE3481 / FICFL411 / 4P10
EURO 5/6

DETAILS *alesaggio - bore D.96,2*

852554M QC000306

pistone
piston

CROSS REF:
[500054560](#)

Mec-Diesel **PRODUCT**
Mec-Diesel **BOX**



APPLICATION FUSO 3.0 HPI - FICE3481 / FICFL411 / 4P10
EURO 5/6

DETAILS *alesaggio - bore D.96,2*

863120

canna cilindro
cylinder sleeve

CROSS REF:

Mec-Diesel **PRODUCT**
Mec-Diesel **BOX**



APPLICATION FUSO 3.0 HPI - FICE3481 / FICFL411 / 4P10
EURO 5/6

DETAILS *adattabile - adaptable*

20340 MK667943

albero a camme
camshaft

CROSS REF:
[504246094](#)

Mec-Diesel **PRODUCT**
Mec-Diesel **BOX**



APPLICATION FUSO 3.0 HPI - FICE3481 / FICFL411 / 4P10
EURO 5/6

DETAILS *aspirazione - intake*

MEC DIESEL

Appuntamento con il motore - .08 tipo motore 4P10 Mitsubishi FUSO 3.0 HDI
Rendezvous with the engine - .08 4P10 engine type Mitsubishi FUSO 3.0 HDI

20350 MK667942

albero a camme
camshaft

CROSS REF:
[504080985](#)

Mec-Diesel **PRODUCT**
Mec-Diesel **BOX**



APPLICATION FUSO 3.0 HPI - FICE3481 / FICFL411 / 4P10
EURO 5/6

DETAILS scarico - exhaust

150160 QC000162

valvola di aspirazione
intake valve

CROSS REF:
[504072531](#)

Iveco **PRODUCT**
Iveco **BOX**



APPLICATION FUSO 3.0 HPI - FICE3481 / FICFL411 / 4P10
EURO 5/6

DETAILS 32.4 X 6 X 119.9 - 30°

150170 QC000143

valvola di scarico
exhaust valve

CROSS REF:
[504081062](#)

Iveco **PRODUCT**
Iveco **BOX**



APPLICATION FUSO 3.0 HPI - FICE3481 / FICFL411 / 4P10
EURO 5/6

DETAILS 32.3 X 6 X 119.9 - 30°

827100 QC000162

valvola di aspirazione
intake valve

CROSS REF:
[504072531](#)

Mec-Diesel **PRODUCT**
Mec-Diesel **BOX**



APPLICATION FUSO 3.0 HPI - FICE3481 / FICFL411 / 4P10
EURO 5/6

DETAILS 32.4 X 6 X 119.9 - 30°

MEC DIESEL

Appuntamento con il motore - .08 tipo motore 4P10 Mitsubishi FUSO 3.0 HDI
Rendezvous with the engine - .08 4P10 engine type Mitsubishi FUSO 3.0 HDI

827110

QC000143

valvola di scarico
exhaust valve

CROSS REF:
504081062

Mec-Diesel **PRODUCT**
Mec-Diesel **BOX**



APPLICATION

FUSO 3.0 HPI - FICE3481 / FICFL411 / 4P10
EURO 5/6

DETAILS

32.3 X 6 X 119.9 - 30°

220350

QC000160

puneria
tappets

CROSS REF:
5802723240

OE Quality **PRODUCT**
Mec-Diesel **BOX**



APPLICATION

FUSO 3.0 HPI - FICE3481 / FICFL411 / 4P10
EURO 5/6

DETAILS

140280

QC000446

pompa olio
oil pump

CROSS REF:
5801851153

Mec-Diesel **PRODUCT**
Mec-Diesel **BOX**



APPLICATION

FUSO 3.0 HPI - FICE3481 / FICFL411 / 4P10
EURO 5/6

DETAILS

140281

QC000446

pompa olio
oil pump

CROSS REF:
5801851153

Iveco **PRODUCT**
Iveco **BOX**



APPLICATION

FUSO 3.0 HPI - FICE3481 / FICFL411 / 4P10
EURO 5/6

DETAILS

MEC DIESEL

Appuntamento con il motore - .08 tipo motore 4P10 Mitsubishi FUSO 3.0 HDI
Rendezvous with the engine - .08 4P10 engine type Mitsubishi FUSO 3.0 HDI

350620 QC000330

pompa acqua
water pump

CROSS REF:
504360207

OMP **PRODUCT**
Mec-Diesel **BOX**



APPLICATION FUSO 3.0 HPI - FICE3481 / FICFL411 / 4P10
EURO 5/6

DETAILS perno - pivot H.76mm
alluminio - aluminum

350620M QC000330

pompa acqua
water pump

CROSS REF:
504360207

Mec-Diesel **PRODUCT**
Mec-Diesel **BOX**



APPLICATION FUSO 3.0 HPI - FICE3481 / FICFL411 / 4P10
EURO 5/6

DETAILS perno - pivot H.76mm
alluminio - aluminum

350621 QC000330

pompa acqua
water pump

CROSS REF:
504360207

Iveco **PRODUCT**
Mec-Diesel **BOX**



APPLICATION FUSO 3.0 HPI - FICE3481 / FICFL411 / 4P10
EURO 5/6

DETAILS perno - pivot H.76mm
alluminio - aluminum

354880 QC000330

pompa acqua
water pump

CROSS REF:
5801634208

OE Quality **PRODUCT**
Mec-Diesel **BOX**



APPLICATION FUSO 3.0 HPI - FICE3481 / FICFL411 / 4P10
EURO 5/6

DETAILS perno - pivot H.76mm
ghisa - cast iron

MEC DIESEL

Appuntamento con il motore - .08 tipo motore 4P10 Mitsubishi FUSO 3.0 HDI
Rendezvous with the engine - .08 4P10 engine type Mitsubishi FUSO 3.0 HDI

358200 MK667228

pompa acqua
water pump

CROSS REF:
[504320901](#)

OMP **PRODUCT**
Mec-Diesel **BOX**



APPLICATION FUSO 3.0 HPI - FICE3481 / FICFL411 / 4P10
EURO 5/6

DETAILS

358201 MK667228

pompa acqua
water pump

CROSS REF:
[504320901](#)

OE Quality **PRODUCT**
Mec-Diesel **BOX**



APPLICATION FUSO 3.0 HPI - FICE3481 / FICFL411 / 4P10
EURO 5/6

DETAILS

483070

kit bulloni testata
cylinder head bolts kit

CROSS REF:

Mec-Diesel **PRODUCT**
Mec-Diesel **BOX**



APPLICATION FUSO 3.0 HPI - FICE3481 / FICFL411 / 4P10
EURO 5/6

DETAILS

383500

kit catena distribuzione
timing chain kit

CROSS REF:

OE Quality **PRODUCT**
Mec-Diesel **BOX**



APPLICATION FUSO 3.0 HPI - FICE3481 / FICFL411 / 4P10
EURO 5/6

DETAILS

MEC DIESEL

Appuntamento con il motore - .08 tipo motore 4P10 Mitsubishi FUSO 3.0 HDI
Rendezvous with the engine - .08 4P10 engine type Mitsubishi FUSO 3.0 HDI

284981 MK667108

guarnizione testa
cylinder head gasket

CROSS REF:
[504093500](#)

Iveco **PRODUCT**
Iveco **BOX**



APPLICATION FUSO 3.0 HPI - FICE3481 / FICFL411 / 4P10
EURO 5/6

DETAILS spessore - thickness 1,1
1 tacca - 1 notch

284980 MK667098

guarnizione testa
cylinder head gasket

CROSS REF:
[504093499](#)

Iveco **PRODUCT**
Iveco **BOX**



APPLICATION FUSO 3.0 HPI - FICE3481 / FICFL411 / 4P10
EURO 5/6

DETAILS spessore - thickness 1,2
2 tacche - 2 notch

284982 QC000153

guarnizione testa
cylinder head gasket

CROSS REF:
[504093501](#)

Iveco **PRODUCT**
Iveco **BOX**



APPLICATION FUSO 3.0 HPI - FICE3481 / FICFL411 / 4P10
EURO 5/6

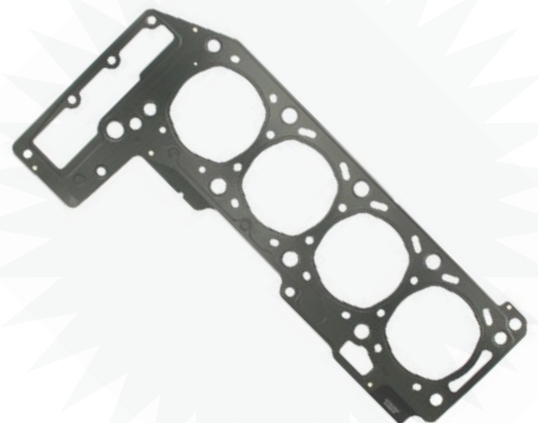
DETAILS spessore - thickness 1,3
3 tacche - 3 notch

875035 MK667108

guarnizione testa
cylinder head gasket

CROSS REF:
[61-36885-00](#)

Victor-Reinz **PRODUCT**
Victor-Reinz **BOX**



APPLICATION FUSO 3.0 HPI - FICE3481 / FICFL411 / 4P10
EURO 5/6

DETAILS spessore - thickness 1,1
1 tacca - 1 notch

MEC DIESEL

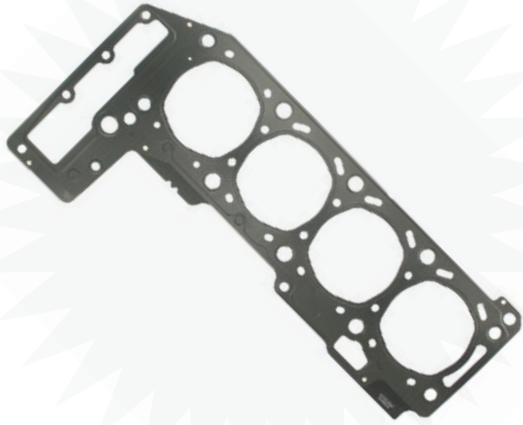
Appuntamento con il motore - .08 tipo motore 4P10 Mitsubishi FUSO 3.0 HDI
Rendezvous with the engine - .08 4P10 engine type Mitsubishi FUSO 3.0 HDI

875036 MK667098

guarnizione testa
cylinder head gasket

Victor-Reinz **PRODUCT**
Victor-Reinz **BOX**

CROSS REF:
[61-36885-10](#)



APPLICATION FUSO 3.0 HPI - FICE3481 / FICFL411 / 4P10
EURO 5/6

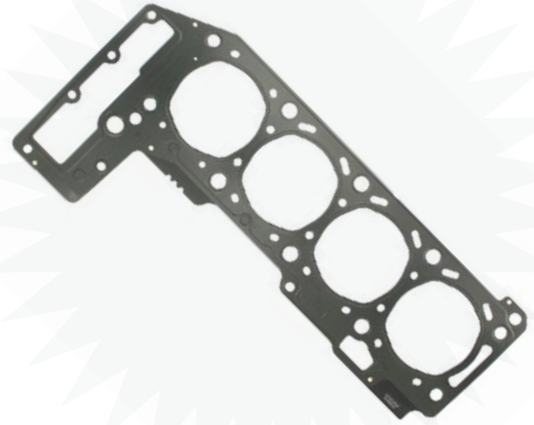
DETAILS spessore - thickness 1,2
2 tacche - 2 notch

875037 QC000153

guarnizione testa
cylinder head gasket

Victor-Reinz **PRODUCT**
Victor-Reinz **BOX**

CROSS REF:
[61-36885-20](#)



APPLICATION FUSO 3.0 HPI - FICE3481 / FICFL411 / 4P10
EURO 5/6

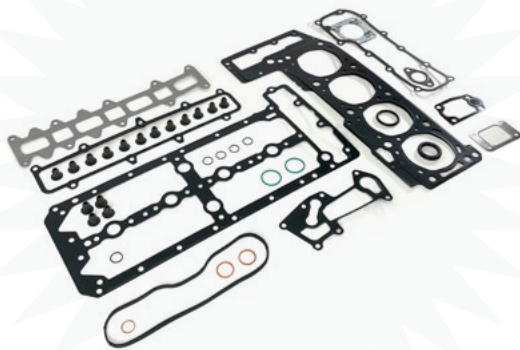
DETAILS spessore - thickness 1,3
3 tacche - 3 notch

250016 QC000290

kit guarnizione testa
cylinder head gasket kit

Iveco **PRODUCT**
Iveco **BOX**

CROSS REF:
[500086190](#)



APPLICATION FUSO 3.0 HPI - FICE3481 / FICFL411 / 4P10
EURO 5/6

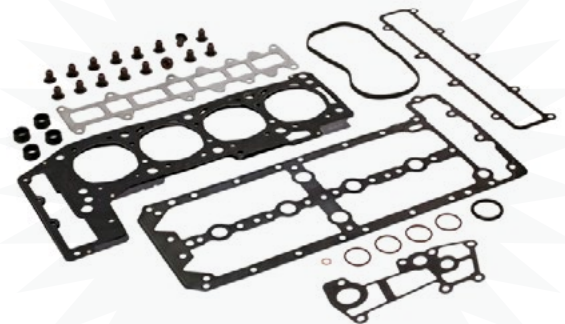
DETAILS

T8002035 QC000290

kit guarnizione testa
cylinder head gasket kit

Victor-Reinz **PRODUCT**
Victor-Reinz **BOX**

CROSS REF:
[02-36885-03](#)



APPLICATION FUSO 3.0 HPI - FICE3481 / FICFL411 / 4P10
EURO 5/6

DETAILS guarnizione con spessore - gasket thickness 1,1
1 tacca - 1 notch

MEC DIESEL

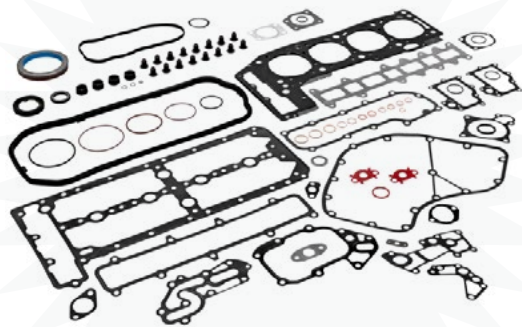
Appuntamento con il motore - .08 tipo motore 4P10 Mitsubishi FUSO 3.0 HDI
Rendezvous with the engine - .08 4P10 engine type Mitsubishi FUSO 3.0 HDI

200185 QC000289

kit guarnizione motore
engine gasket kit

CROSS REF:
[2996891](#)

Iveco **PRODUCT**
Iveco **BOX**



APPLICATION FUSO 3.0 HPI - FICE3481 / FICFL411 / 4P10
EURO 5/6

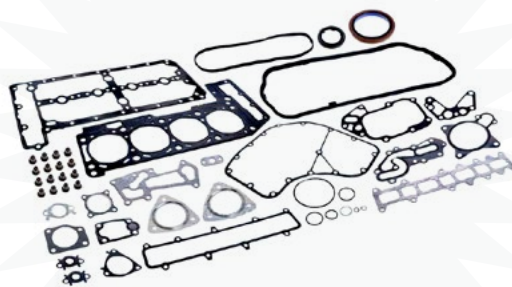
DETAILS unitamente a cod. 910205 - with cod.910205

T893200 QC000289

kit guarnizione motore
engine gasket kit

CROSS REF:
[01-36885-03](#)

Victor-Reinz **PRODUCT**
Victor-Reinz **BOX**



APPLICATION FUSO 3.0 HPI - FICE3481 / FICFL411 / 4P10
EURO 5/6

DETAILS guarnizione con spessore - gasket thickness 1,1
1 tacca - 1 notch
unitamente a cod. 910205 - with cod.910205

342030BX QC000154C

iniettore
injector nozzle

CROSS REF:
[0986435395](#)

Bosch **PRODUCT**
Bosch **BOX**



APPLICATION FUSO 3.0 HPI - FICE3481 / FICFL411 / 4P10
EURO 5/6

DETAILS revisionato - reman

342031 QC000154C

iniettore
injector nozzle

CROSS REF:
[0445116059](#)

Bosch **PRODUCT**
Bosch **BOX**



APPLICATION FUSO 3.0 HPI - FICE3481 / FICFL411 / 4P10
EURO 5/6

DETAILS

MEC DIESEL

Appuntamento con il motore - .08 tipo motore 4P10 Mitsubishi FUSO 3.0 HDI
Rendezvous with the engine - .08 4P10 engine type Mitsubishi FUSO 3.0 HDI

342030IV QC000154C

iniettore
injector nozzle

CROSS REF:
[5801540211](#)

Iveco **PRODUCT**
Iveco **BOX**



APPLICATION FUSO 3.0 HPI - FICE3481 / FICFL411 / 4P10
EURO 5/6

DETAILS

342600BX QC000353

iniettore
injector nozzle

CROSS REF:
[0986435255](#)

Bosch **PRODUCT**
Bosch **BOX**



APPLICATION FUSO 3.0 HPI - FICE3481 / FICFL411 / 4P10
EURO 5/6

DETAILS *revisionato - reman*

342600 QC000353

iniettore
injector nozzle

CROSS REF:
[0445110564](#)

Bosch **PRODUCT**
Mec-Diesel **BOX**



APPLICATION FUSO 3.0 HPI - FICE3481 / FICFL411 / 4P10
EURO 5/6

DETAILS

342601 QC000353

iniettore
injector nozzle

CROSS REF:
[5801644454](#)

Iveco **PRODUCT**
Iveco **BOX**



APPLICATION FUSO 3.0 HPI - FICE3481 / FICFL411 / 4P10
EURO 5/6

DETAILS

MEC DIESEL

Appuntamento con il motore - .08 tipo motore 4P10 Mitsubishi FUSO 3.0 HDI
Rendezvous with the engine - .08 4P10 engine type Mitsubishi FUSO 3.0 HDI

340960 MK667298

pompa iniezione
injection pump

CROSS REF:
504342423

Iveco **PRODUCT**
Iveco **BOX**



APPLICATION

FUSO 3.0 HPI - FICE3481 / FICFL411 / 4P10
EURO 5/6

DETAILS

340961 MK667298

pompa iniezione
injection pump

CROSS REF:
0986437437

Bosch **PRODUCT**
Bosch **BOX**



APPLICATION

FUSO 3.0 HPI - FICE3481 / FICFL411 / 4P10
EURO 5/6

DETAILS

revisionato - reman

340962 MK667298

pompa iniezione
injection pump

CROSS REF:
504371260

Iveco **PRODUCT**
Neutral **BOX**



APPLICATION

FUSO 3.0 HPI - FICE3481 / FICFL411 / 4P10
EURO 5/6

DETAILS

53100333 QC000671

turbochargercompressore
turbochargercharger

CROSS REF:
789773-5033S

Garrett **PRODUCT**
Garrett **BOX**



APPLICATION

FUSO 3.0 HPI - FICE3481 / FICFL411 / 4P10
EURO 5/6

DETAILS

129KW
GTB2056V

MEC DIESEL

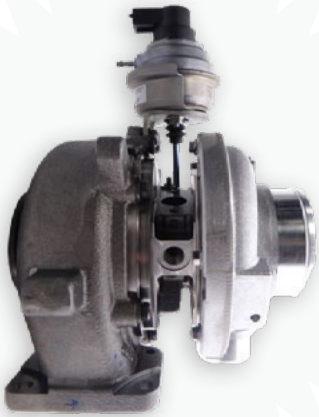
Appuntamento con il motore - .08 tipo motore 4P10 Mitsubishi FUSO 3.0 HDI
Rendezvous with the engine - .08 4P10 engine type Mitsubishi FUSO 3.0 HDI

53100333R
QC000671

turbochargercompressore
turbochargercharger

CROSS REF:
789773-9033S

Garrett **PRODUCT**
Garrett **BOX**



APPLICATION

FUSO 3.0 HPI - FICE3481 / FICFL411 / 4P10
EURO 5/6

DETAILS

129KW
GTB2056V