

MEC DIESEL



TESTE CILINDRO PER APPLICAZIONE 4x4 CYLINDER HEADS FOR 4WD APPLICATION

>> APPUNTAMENTO CON IL MOTORE <<
RENDEZVOUS WITH THE ENGINE

TESTE CILINDRO PER APPLICAZIONE BMW 4X4

Cylinder heads for BMW 4WD application • Culasses pour les applications BMW 4x4
Culatas para aplicaciones BMW 4x4 • Zylinderköpfe für BMW 4x4-Anwendung



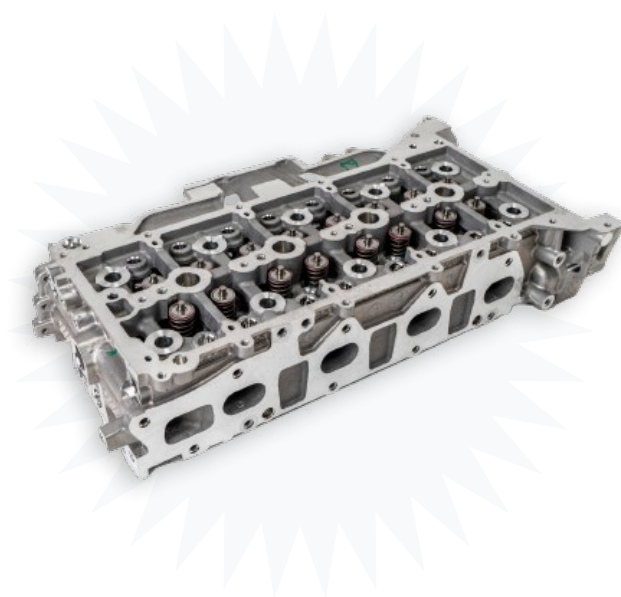
BMW
applicazione - application

MEC REF	OE REF	DESCRIZIONE - Description	
103110	11127806058	BMW X3 (E83) 2.0D 16V 4X4 M47D20	senza valvole without valves



TESTE CILINDRO PER APPLICAZIONE FORD 4X4

Cylinder heads for FORD 4WD application • Culasses pour les applications FORD 4x4
Culatas para aplicaciones FORD 4x4 • Zylinderköpfe für FORD 4x4-Anwendung



FORD
applicazione - application

MEC REF	OE REF	DESCRIZIONE - Description
101272	2548193	BCCC/D - BCFA/B/C/D BCRA - BJFA/B/C/D - BJRA BKFA/B/C - YNR6 - YNRA YLBC/C - YLDA con valvole with valves
101273	2548193	BCCC/D - BCFA/B/C/D BCRA - BJFA/B/C/D - BJRA BKFA/B/C - YNR6 - YNRA YLBC/C - YLDA senza valvole without valves
101232	2548191	BCCD - BJFA/B/C/D - BJRA BKFA/B/C/D - BKRA/B YLF6/YLFA/B con valvole with valves
101233	2548191	BCCD - BJFA/B/C/D - BJRA BKFA/B/C/D - BKRA/B YLF6/YLFA/B senza valvole without valves
101162	1740108	CV24 - CVR5 - CVRA/B/C CY24 - CYRA/B/C - DRR5 DRRR/B/C - GBVAJPF GBVAJQJ con valvole with valves



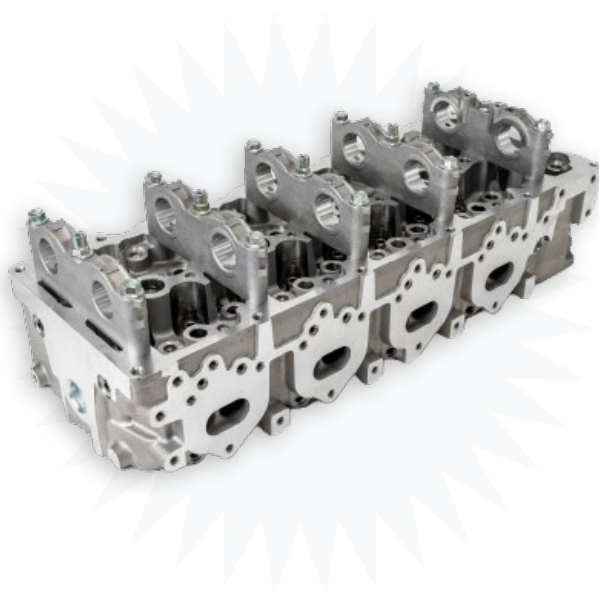
TESTE CILINDRO PER APPLICAZIONE FORD 4X4

Cylinder heads for FORD 4WD application • Culasses pour les applications FORD 4x4
Culatas para aplicaciones FORD 4x4 • Zylinderköpfe für FORD 4x4-Anwendung

MEC REF	OE REF	DESCRIZIONE - Description			
101160	1740108	TRANSIT RANGER 2.2 TDCI 16V 4X4	CV24 - CVR5 - CVRA/B/C CY24 - CYRA/B/C - DRR5 DRRA/B/C - GBVAJPF GBVAJQJ	senza valvole without valves	
104252	1433148	TRANSIT 2.4 TDCI 16V 4X4	H9FB - H9FD - JXFA - PHFA	con valvole with valves	
104250	1433148	TRANSIT 2.4 TDCI 16V 4X4	H9FB - H9FD - JXFA - PHFA	senza valvole without valves	
105311	4929776	RANGER 2.5TD 12V 4X4	WL-T	senza valvole without valves	con tubo a 2 vie with two-way piping

TESTE CILINDRO PER APPLICAZIONE HYUNDAI KIA 4X4

Cylinder heads for HYUNDAI KIA 4WD application • Culasses pour les applications HYUNDAI KIA 4x4
Culatas para aplicaciones HYUNDAI KIA 4x4 • Zylinderköpfe für HYUNDAI KIA 4x4-Anwendung

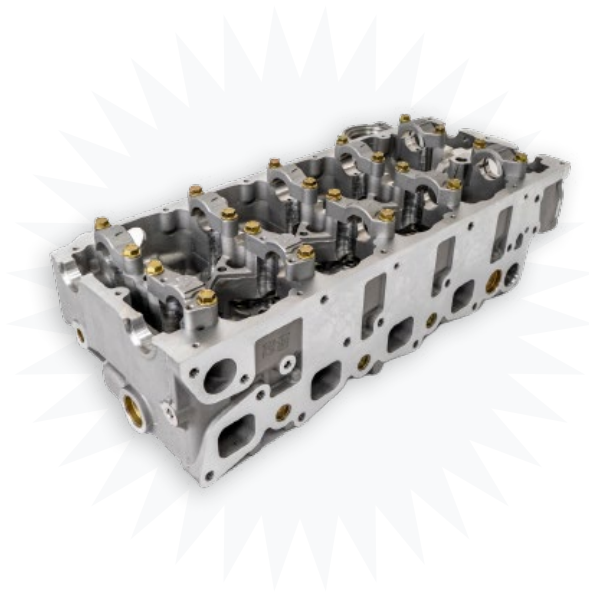


HYUNDAI KIA
applicazione - application

MEC REF	OE REF	DESCRIZIONE - Description		
103760	OR2TF10100B	BESTA/SPORTAGE 2.0 TD 2.2 D 8V 4X4	K2 - RF	senza valvole without valves
103370	22100-27902	SANTA FE/TUCSON 2.0 CRDI 16V 4X4	D4EA - D4EB	senza valvole without valves
103380	22100-27800	SANTA FE/TUCSON 2.0 2.2 CRDI 16V 4X4	D4EA - D4EA V - D4EB	senza valvole without valves
101510	22100-2F000	IX35/TUCSON/SANTA FE 2.0/2.2 CRDI 16V 4X4	D4HA - D4HB	senza valvole without valves
103970	22100-4A010	H1/H350/SORENTO 2.5 CRDI 16V 4X4	D4CB	senza valvole without valves
100605	22100-4A020	H1/H350/SORENTO 2.5 CRDI 16V 4X4	D4CB	senza valvole without valves
100615	22100-4A250	H1/H350/SORENTO 2.5 CRDI 16V 4X4	D4CB	senza valvole without valves

TESTE CILINDRO PER APPLICAZIONE ISUZU 4X4

Cylinder heads for ISUZU 4WD application • Culasses pour les applications ISUZU 4x4
Culatas para aplicaciones ISUZU 4x4 • Zylinderköpfe für ISUZU 4x4-Anwendung



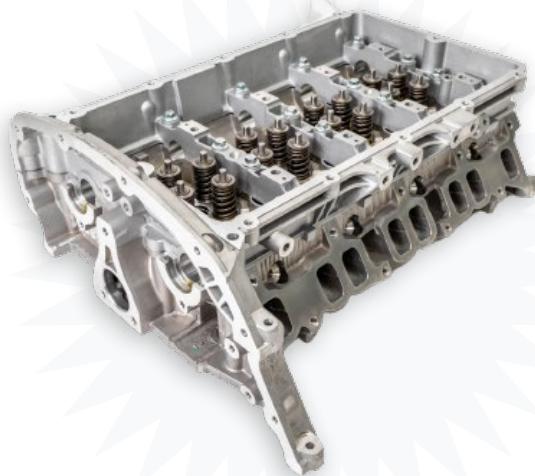
ISUZU
applicazione - application

MEC REF	OE REF	DESCRIZIONE - Description		
101310	8981756060	D-MAX 2.5/3.0 TD 16V 4X4	4JJ1TC/TCS/X 4JK 1TC/TCX	senza valvole without valves



TESTE CILINDRO PER APPLICAZIONE LAND ROVER 4X4

Cylinder heads for LAND ROVER 4WD application • Culasses pour les applications LAND ROVER 4x4
Culatas para aplicaciones LAND ROVER 4x4 • Zylinderköpfe für LAND ROVER 4x4-Anwendung



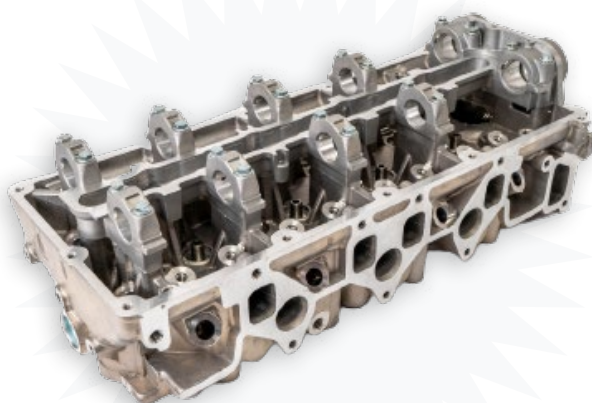
LAND ROVER

applicazione - application

MEC REF	OE REF	DESCRIZIONE - Description			
104252	LR10185	DEFENDER 2.4 TD4 16V 4X4	DT244	con valvole with valves	
107740	STC803	DEFENDER 90/110 2.5 D/TD 8V 4X4	12J - 19J	senza valvole without valves	ghisa cast-iron
103150	LDF500170	DEFENDER 2.5 TD5 5 CYL 10V 4X4	10P - 14P - 15P	senza valvole without valves	con 1 foro x iniettore with 1 injector nozzle hole
100070	ERR5027	DEFENDER/DISCOVERY 2.5 TDI 4X4	21L	senza valvole without valves	

TESTE CILINDRO PER APPLICAZIONE MAZDA 4X4

Cylinder heads for MAZDA 4WD application • Culasses pour les applications MAZDA 4x4
Culatas para aplicaciones MAZDA 4x4 • Zylinderköpfe für MAZDA 4x4-Anwendung



MAZDA
applicazione - application

MEC REF	OE REF		DESCRIZIONE - Description	
105340	WE0110100K	MPV/B2500/RANGER 2.5/3.0 TDCI 16V 4X4	WLAA - WLAT	senza valvole without valves 
105310	WL1110100A	MPV/B2500/RANGER 2.5 TD 12V 4X4	WL-T	senza valvole without valves con tubo a 2 vie with two-way piping
105300	WL3110100H	MPV/B2500/RANGER 2.5 TD 12V 4X4	WL-T	senza valvole without valves con tubo a 1 via with one-way piping
105320	WL1110100E	MPV/B2500/RANGER 2.5 TD 12V 4X4	WL-T	senza valvole without valves con tubo a 3 vie with three-way piping


TESTE CILINDRO PER APPLICAZIONE MITSUBISHI 4X4

Cylinder heads for MITSUBISHI 4WD application • Culasses pour les applications MITSUBISHI 4x4
Culatas para aplicaciones MITSUBISHI 4x4 • Zylinderköpfe für MITSUBISHI 4x4-Anwendung



MITSUBISHI

applicazione - application

MEC REF	OE REF	DESCRIZIONE - Description		
104912K	2200042A20	L200/L300/L400 PAJERO 2.5 TD 8V 4X4	4D56 D4BA D4BH	kit testa con valvole albero distribuzione serie smeriglio bulloni testata C.H. kit with valves camshaft cylinder head gasket cylinder head bolts valvole incassate embedded valves aspirazione - intake Ø40 mm scarico - exhaust Ø34 mm 1.130,2
104912	2200042A20	L200/L300/L400 PAJERO 2.5 TD 8V 4X4	4D56 D4BA D4BH	con valvole con albero distribuzione with valves with camshaft valvole incassate embedded valves aspirazione - intake Ø40 mm  scarico - exhaust Ø34 mm 1.130,2
104910K	MD303750	L200/L300/L400 PAJERO 2.5 TD 8V 4X4	4D56 D4BA D4BH	kit testa senza valvole serie smeriglio bulloni testata C.H. kit without valves cylinder head gasket cylinder head bolts valvole incassate embedded valves aspirazione - intake Ø40 mm scarico - exhaust Ø34 mm 1.130,2



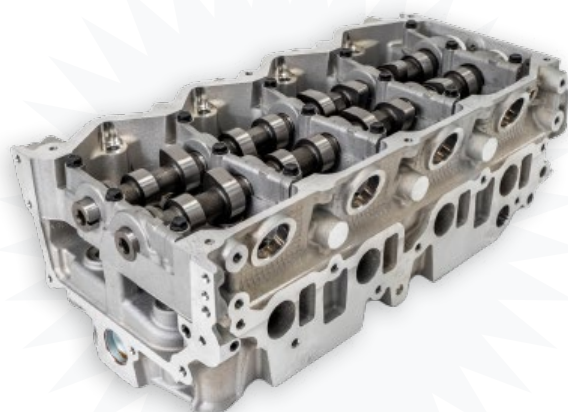
TESTE CILINDRO PER APPLICAZIONE MITSUBISHI 4X4

Cylinder heads for MITSUBISHI 4WD application • Culasses pour les applications MITSUBISHI 4x4
Culatas para aplicaciones MITSUBISHI 4x4 • Zylinderköpfe für MITSUBISHI 4x4-Anwendung

MEC REF	OE REF	DESCRIZIONE - Description			
104910	MD303750	L200/L300/L400 PAJERO 2.5 TD 8V 4X4	4D56 D4BA D4BH	senza valvole without valves	valvole incassate embedded valves aspirazione - intake Ø40 mm scarico - exhaust Ø34 mm I.130,2
109212K	MD109736	L200/L300/L400 PAJERO 2.5 TD 8V 4X4	4D56 D4BA	kit testa con valvole albero distribuzione serie smeriglio bulloni testata C.H. kit with valves camshaft cylinder head gasket cylinder head bolts	valvole sporgenti protruding valves aspirazione - intake Ø40 mm scarico - exhaust Ø34 mm I.136,5
109212	MD109736	L200/L300/L400 PAJERO 2.5 TD 8V 4X4	4D56 D4BA	con valvole con albero distribuzione with valves with camshaft	valvole sporgenti protruding valves aspirazione - intake Ø40 mm scarico - exhaust Ø34 mm I.136,5
109210K	MD109736	L200/L300/L400 PAJERO 2.5 TD 8V 4X4	4D56 D4BA	kit testa senza valvole serie smeriglio bulloni testata C.H. kit without valves cylinder head gasket cylinder head bolts	valvole sporgenti protruding valves aspirazione - intake Ø40 mm scarico - exhaust Ø34 mm I.136,5
109210	MD109736	L200/L300/L400 PAJERO 2.5 TD 8V 4X4	4D56 D4BA	senza valvole without valves	valvole sporgenti protruding valves aspirazione - intake Ø40 mm scarico - exhaust Ø34 mm I.136,5
109550	1005B453	PAJERO L200 2.5 DI-D TDI 16V 4X4	4D56 HP	senza valvole without valves	
109552	1005A560	PAJERO L200 2.5 DI-D TDI 16V 4X4	4D56 HP	con valvole con albero distribuzione with valves with camshaft	
100320	ME202621	PAJERO 2.8 D 8V 4X4	4M40	senza valvole without valves	fori collettore scarico exhaust manifold holes 38x31mm
100340	ME202620	PAJERO 2.8 TD 8V 4X4	4M40 T	senza valvole without valves	fori collettore scarico exhaust manifold holes 28x30mm
103830	ME204200	PAJERO 3.2 DI-D 16V 4X4	4M41	senza valvole without valves	no commonrail aspirazione - intake Ø33 mm scarico - exhaust Ø31mm
103840	1005B340	PAJERO 3.2 DI-D 16V 4X4	4M41	senza valvole without valves	common rail

TESTE CILINDRO PER APPLICAZIONE NISSAN 4X4

Cylinder heads for NISSAN 4WD application • Culasses pour les applications NISSAN 4x4
Culatas para aplicaciones NISSAN 4x4 • Zylinderköpfe für NISSAN 4x4-Anwendung



NISSAN
applicazione - application

MEC REF	OE REF		DESCRIZIONE - Description		
103720	11040AW401	X-TRAIL 2.2 DCI 16V 4X4	YD22DDT YD22DDTi YD22ETI	senza valvole without valves	common rail con 1 foro sensore acqua 1 hole for water sensor
103700	11040AW802	X-TRAIL 2.2 DCI 16V 4X4	YD22DDT YD22ETI	senza valvole without valves	common rail con 2 fori sensore acqua 2 holes for water sensor
102852	11040-EB30A	X-TRAIL/NAVARA/PATHFINDER 2.2/2.5 DCI 16V 4X4	YD22ETI YD25ETI YD25DDTi	con valvole alberi distribuzione with valves with camshafts	common rail con 4 fori collettore lato aspirazione 4 holes intake manifold intake side
102850	11040-EB30A	X-TRAIL/NAVARA/PATHFINDER 2.2/2.5 DCI 16V 4X4	YD22ETI YD25ETI YD25DDTi	senza valvole without valves	common rail con 4 fori collettore lato aspirazione 4 holes intake manifold intake side
102842	11040-5M300	NAVARA/MURANO/PATHFINDER 2.2/2.5 DCI 16V 4X4	YD22DDT YD25DDTi	con valvole alberi distribuzione with valves with camshafts	non common rail con 8 fori collettore lato aspirazione 8 holes intake manifold intake side



TESTE CILINDRO PER APPLICAZIONE NISSAN 4X4

Cylinder heads for NISSAN 4WD application • Culasses pour les applications NISSAN 4x4
Culatas para aplicaciones NISSAN 4x4 • Zylinderköpfe für NISSAN 4x4-Anwendung

MEC REF	OE REF		DESCRIZIONE - Description		
102840	11040-5M300	NAVARA/MURANO/PATHFINDER 2.2/2.5 DCI 16V 4X4	YD22DDT YD25DDTi	senza valvole without valves	non common rail con 8 fori collettore lato aspirazione 8 holes intake manifold intake side
100710	110393S902	PICK-UP 2.5 TD 8V 4X4	TD25Ti	senza valvole without valves	iniettore - injector Ø20 mm aspirazione - intake Ø41,5 mm scarico - exhaust Ø37 mm
102860	11040-5X00A	NAVARA/MURANO PATHFINDER 2.5 DCI 16V 4X4	YD25DDTi YD25ETi	senza valvole without valves	common rail con 8 fori collettore lato aspirazione 8 holes intake manifold intake side
107270	110397F401	TERRANO I/II 2.7 TD 8V 4X4	TD27	senza valvole without valves	foro iniettore Ø20 mm injector nozzle hole Ø20 mm
107260	110397F409	TERRANO II 2.7 TD 8V 4X4	TD27	senza valvole without valves	foro iniettore Ø24 mm injector nozzle hole Ø24 mm
109970	1021428122	PATROL 2.8 TD 12V 4X4	RD28T	senza valvole without valves	per punterie idrauliche con 2 fori per depressore for hydraulic tappets 2 hole for depressor
102700	11040-VB301	PATROL 2.8 TD 12V 4X4	RD28Ti	senza valvole without valves	punterie meccaniche mechanical tappets
102882	11039-MA70A	TERRANO 3.0 DCI 16V 4X4	ZD30	con valvole alberi distribuzione with valves with camshafts	common rail fori collettore in/ex in linea inline in/ex manifold holes
102880	11039-MA70A	TERRANO 3.0 DCI 16V 4X4	ZD30	senza valvole without valves	common rail fori collettore in/ex in linea inline in/ex manifold holes

TESTE CILINDRO PER APPLICAZIONE SUZUKI 4X4

Cylinder heads for SUZUKI 4WD application • Culasses pour les applications SUZUKI 4x4
Culatas para aplicaciones SUZUKI 4x4 • Zylinderköpfe für SUZUKI 4x4-Anwendung

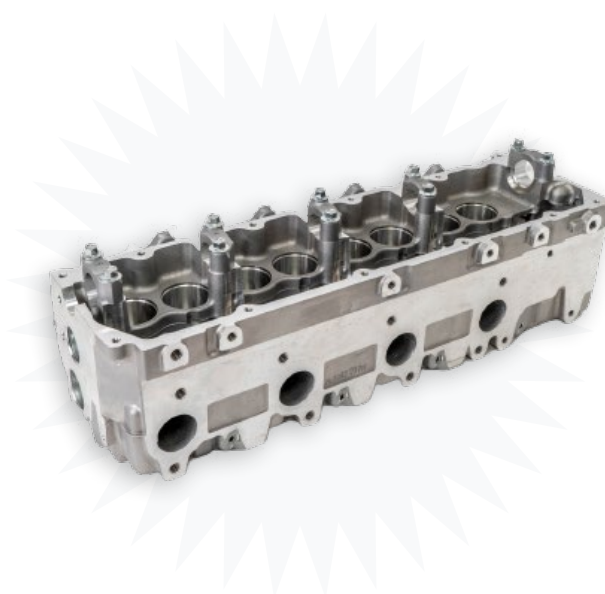


SUZUKI
applicazione - application

MEC REF	OE REF	DESCRIZIONE - Description			
100490	R2L1-100-10	GRAND VITARA 2.0 TD 8V 4X4	RF - RFN	senza valvole without valves	iniettore Ø20 mm injector hole Ø20 mm
100500	R2L1-100-10TD	VITARA 2.0 TD 8V 4X4	RF - CX	senza valvole without valves	iniettore Ø24 mm bocchettone lato iniettori injector hole Ø24 mm intake (injector nozzles side)
100890	MRFJ510100D	GRAND VITARA VITARA 2.0 TD 8V 4X4	RF	senza valvole without valves	iniettore Ø24 mm bocchettone lato iniettori intake (injector nozzles side)
102200	9011870040	VITARA 2.0/2.2 D/TD 8V 4X4	R2 - RF	senza valvole without valves	iniettore Ø24 mm bocchettone lato stretto guida ex 17,5 mm injector hole Ø24 mm intake (short side)  exhaust Ø17.5mm
101280	11100-57B02	JIMNY/VITARA 1.3/1.6 16V 4X4	G13BB G16B	senza valvole without valves	distanza tra bilancieri 38mm rocker spacing 38mm
109490	11110-80002	CARRY/SAMURAI SJ410 1.0 8V 4X4	F10A	senza valvole without valves	

TESTE CILINDRO PER APPLICAZIONE TOYOTA 4X4

Cylinder heads for TOYOTA 4WD application • Culasses pour les applications TOYOTA 4x4
Culatas para aplicaciones TOYOTA 4x4 • Zylinderköpfe für TOYOTA 4x4-Anwendung



TOYOTA
applicazione - application

MEC REF	OE REF	DESCRIZIONE - Description				
107940	11101-54111	HILUX/LAND CRUISER 2.4 D 8V 4X4	2L	senza valvole without valves	5 supporti - 5 brackets in ghisa - cast iron con asola - with flange	
107930	11101-54121	HILUX/LAND CRUISER 2.4 D 8V 4X4	2L-TII	senza valvole without valves	5 supporti - 5 brackets in ghisa - cast iron senza con asola - without flange	
104690	11101-54062	HILUX/LAND CRUISER 2.4 D 8V 4X4	2L	senza valvole without valves	3 supporti - 3 brackets in ghisa - cast iron	
100250	11101-69128	LAND CRUISER/4 RUNNER 3.0 TD 8V 4X4	1KZ T - 1KZ TE	senza valvole without valves	alluminio - aluminium per valvole - for valves lunghezza - lenght 103,5 mm	
100270	11101-69175	LAND CRUISER 3.0 TD 8V 4X4	1KZ TE	senza valvole without valves	alluminio - aluminium per valvole - for valves lunghezza - lenght 104,3 mm	
101450	11101-56034	LAND CRUISER 3.0 D 8V 4X4	B	senza valvole without valves	in ghisa - cast iron	
100980	11101-58014	LAND CRUISER 3.4 D 8V 4X4	3B	senza valvole without valves	in ghisa - cast iron	

TESTE CILINDRO PER APPLICAZIONE VOLKSWAGEN 4X4

Cylinder heads for VOLKSWAGEN 4WD application • Culasses pour les applications VOLKSWAGEN 4x4
Culatas para aplicaciones VOLKSWAGEN 4x4 • Zylinderköpfe für VOLKSWAGEN 4x4-Anwendung



VOLKSWAGEN

applicazione - application

MEC REF	OE REF	DESCRIZIONE - Description
102290M	03L103351B	GOLF VARIANT 1.6 TDI 16V 4X4 CAYA/B/C/D/E - CLNA senza valvole without valves
101181M	04L103064	GOLF VARIANT 1.6 TDI 16V 4X4 CLHA/B - CRKA/B CXXA - DBKA - DCXA DCZA - DDYA - DGDA/B senza valvole without valves
105000	038103351D	TIGUAN PASSAT 1.9 TDI 8V 4X4 AJM - ANU - ARL - ASZ ATD ... BDJ - BDK - BGW BKC - BLS - BLT - BMM BMP ... senza valvole without valves
103410M	03L 103 351 P	AMAROK 2.0 TDI 16V 4X4 CDBA - CDCA - CKTB CKTC - CKUB - CKUC CNEA - CNFA/B - CSHA senza valvole without valves
101690	03L103265L	AMAROK 2.0 TDI 16V 4X4 CKTB/C - CKUB/C CNEA - CSHA - CSLA/B/C CSNA senza valvole without valves
103420M	03L 103 351 N	CRAFTER/AMAROK 2.0TDI 16V CDBA - CDCA - CKTB CKTC - CKUB - CKUC CNEA - CNFA/B - CSHA senza valvole without valves



TESTE CILINDRO PER APPLICAZIONE VOLKSWAGEN 4X4

Cylinder heads for VOLKSWAGEN 4WD application • Culasses pour les applications VOLKSWAGEN 4x4
Culatas para aplicaciones VOLKSWAGEN 4x4 • Zylinderköpfe für VOLKSWAGEN 4x4-Anwendung

MEC REF	OE REF	DESCRIZIONE - Description		
103440	03L 103 351 L	MULTIVAN 2.0 TDI 16V 4X4	CFCA	senza valvole without valves
100920M	03L103351	TIGUAN PASSAT 2.0 TDI 16V 4X4	CBAA/B/C - CBBA/B CBDA/B/C - CJAA CJDA/D	senza valvole without valves
100140M	03G103351E	TOURAN PASSAT 2.0 TDI 16V 4X4	AZV - BKD - BLB - BMN BNA - BRD - BRE - BRF BUY - BVA - BVF - BVG	senza valvole without valves
100140MK	03G103351E	TOURAN PASSAT 2.0 TDI 16V 4X4	AZV - BKD - BLB - BMN BNA - BRD - BRE - BRF BUY - BVA - BVF - BVG	kit testa senza valvole serie smeriglio bulloni testata cylinder head kit without valves cylinder head gasket cylinder head bolt
102310M	03L103351K	MULTIVAN/CALIFORNIA 2.0 TDI 16V 4X4	CAAA/B/C/D/E CCHA/B - CPYA/B/C/D/E	senza valvole without valves
102300	070103063D	MULTIVAN/CALIFORNIA 2.5 TDI 10V 4X4	AXD - AXE - BAC - BLJ BLK - BNZ - BPC - BPD BPE	senza valvole without valves