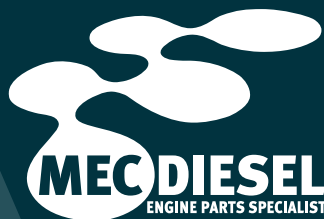




BLINKEN

AUTOMOTIVE SOLUTIONS



www.blinken.it



The evolution of spare parts

INDEX

WHAT IS BLINKEN	04
<hr/>	
DIESEL INJECTION AND COMMON RAIL	06
<hr/>	
GLOW PLUGS	07
<hr/>	
STARTERS	08
<hr/>	
ALTERNATORS	09
<hr/>	
EGR MODULES AND VALVES	10
<hr/>	
THROTTLE BODIES	11
<hr/>	
FUEL FEED UNITS	12
<hr/>	
DENOX	13
<hr/>	
THERMOSTATS	14
<hr/>	
THERMAL SYSTEM	15
<hr/>	
AIR FLOW SENSORS	16
<hr/>	
SENSORS	17
<hr/>	
ELECTRICAL COMPONENTS	18
<hr/>	

BLINKEN SPARE PARTS AT 360° FROM TRUCK TO PASSENGER CAR



Blinken is the result of the thirty-year experience of **Mec-Diesel** group: it is a business unit dedicated to the development of spare parts for trucks, commercial vehicles and passenger cars.

Blinken wants to focus on some product families: power and injection, electric motor management, EGR and throttle bodies, ignition systems and rotating machines, thermal and cooling systems, sensors and much more.

Blinken products, that are developed and tested by Italian and foreign leading manufacturers, are carefully selected to meet the needs of a market that is increasingly searching for high quality standards at the best possible price.

Alongside **Blinken** branded products, the company distributes OE quality spare parts to satisfy all the needs of the market. In addition, the excellent technical expertise of our internal and external sales teams, along with the constant availability of spare parts and the quick order management guarantee the best possible service to the customer.

24H DELIVERY
in Italy



E-COMMERCE
webshop.mecdiesel.it



CUSTOMER SERVICE
qualified employees



WHY BLINKEN?



THE BLINKEN OFFER

A wide range of technologically advanced products from trucks to passenger cars; high quality at the best value for money. **Blinken** distributes spare parts for 14 product families: alternators and starters, glow plugs, air flow sensors, denox, EGR, fuel feed units, diesel injection, sensors, thermostats, cooling, heat exchangers, thermal system and electrical spare parts.



COMMERCIAL VEHICLE AND TRUCK SPECIALISTS

Since 1983 **Mec-Diesel** has been a truck and commercial vehicle specialist, thanks to the technical expertise of its staff and its widespread presence on the Italian territory. The enthusiasm stays ahead our work every day, trying to pass down our passion to those who have chosen to work with us.

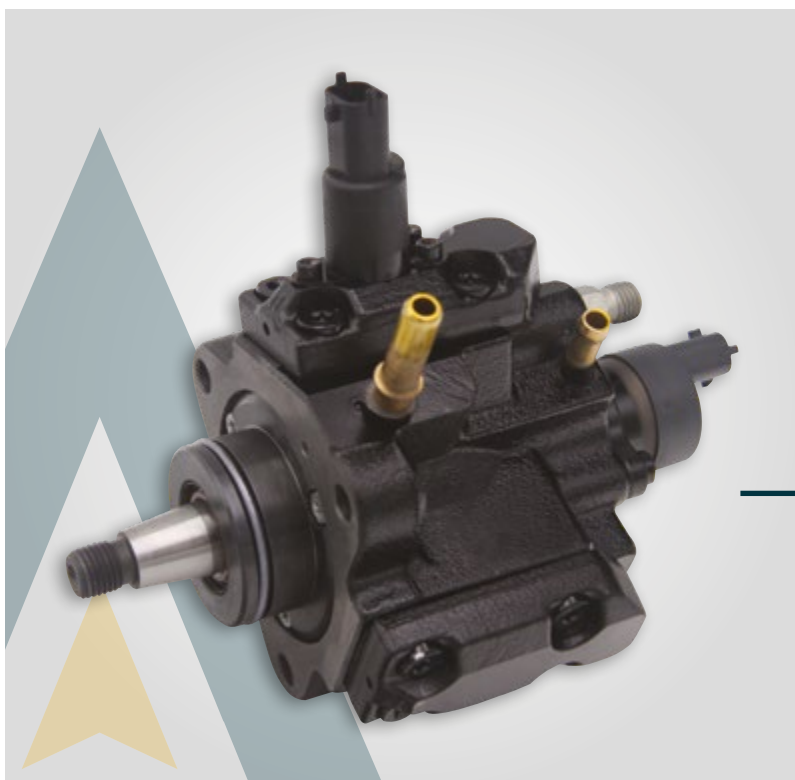


WIDE STOCK AND DISTRIBUTION

Our four warehouses in Italy allow us to deliver one or more times a day, providing an excellent service throughout the country. In addition, the high availability in stock allows products to be always ready to be shipped.

DIESEL INJECTION AND COMMON RAIL

▲ The first product family in terms of investment.



The **Common Rail** is a diesel injection system made of a single line, which connects the injection pump (a low-pressure pump with a high-pressure pump in series) to a series of electronically controlled injectors, with autonomy between management of injection pressure and time.

The pump does not determine the fuel amount that needs to be injected, which is the task of the injectors instead.

COD. 340240 **INJECTION PUMP**

- ▲ OE IVECO: 99483254, 503646995
- ▲ Applications: IVECO Daily, CITROËN Jumper
- ▲ Engine types: 8140.43.B, 8140.43S

COD. 342010 **INJECTOR NOZZLE**

- ▲ OE IVECO: 504287070, 504125329, 504080487
- ▲ Applications: IVECO Stralis, IVECO Trakker
- ▲ Engine types: F3AE3681, F3B3681, F3HFE611



COD. 340671 **ELETTROINJECTOR**

- ▲ OE IVECO: 504088823, 504380117
- ▲ Applications: FIAT Ducato, IVECO Daily
- ▲ Engine types: F1CE0481, F1CE0481, F1CE0481



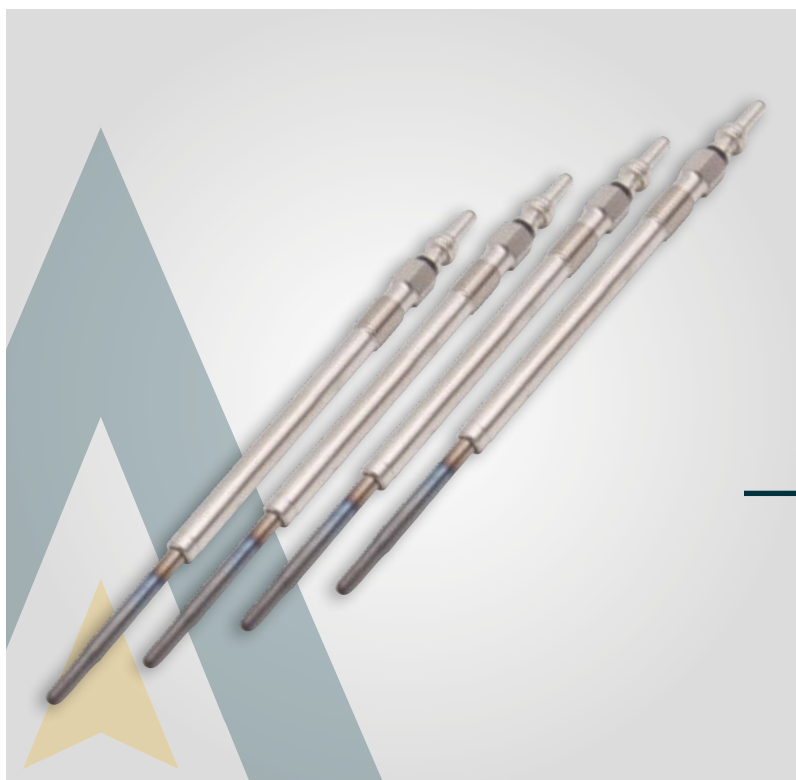
COD. 341031 **HIGH PRESSURE PUMP**

- ▲ OE IVECO: 5801382396, 4896958, 84385110
- ▲ Applications: IVECO EuroCargo
- ▲ Engine types: F4AE0481, F4AE3481, F4AE0681, F4AE3681



GLOW PLUGS

▲ Special attention to product quality.



The glow plugs are elements that reach incandescence in a very short time, they act before starting to facilitate it and reduce emissions and noise. They are powered by the electrical system.

COD. 900002 **GLOW PLUG M8X1 / 11V**

- ▲ OE IVECO: 500351992, 71772817
OE CITROËN: 5960 A3, 5960 K4
- ▲ Applications: FIAT Ducato, IVECO Daily, CITROËN Jumper
- ▲ Engine types: F1AE0481, F1AE3481, F1CE0481, F1CE3481

COD. 470020 **GLOW PLUG M9X1 / 4,4V**

- ▲ OE FIAT: 55210051, 71772815
- ▲ Applications: FIAT Doblò, Panda, Grande Punto
- ▲ Engine types: 199 A1.000, 199 B1.000, 263 A2.000

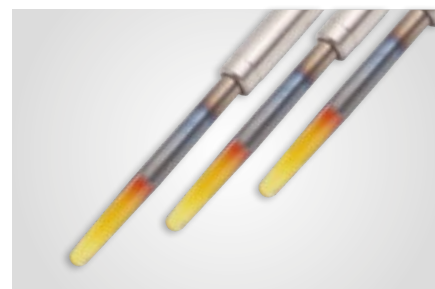


COD. 940746 **GLOW PLUGS EXTENSION**

- ▲ OE IVECO: 504374142, 504087619
- ▲ Applications: IVECO Stralis
- ▲ Engine types: F2BE0641, F2BE0642



GLOWING DETAIL



STARTERS

▲ Main actors in vehicle ignition, one of the most important product families.



The **starter** is an engine component that allows the transformation of electrical energy into mechanical, that is necessary for the combustion of engine starting.

COD. 332002 **STARTER** **24V / 4KW / N°TEETH 10**

- ▲ OE IVECO: 5801577135, 5801381129, 2995986
- ▲ Applications: IVECO EuroCargo
- ▲ Engine types: F4AE0481, F4AE3481, F4AE0681, F4AE3681

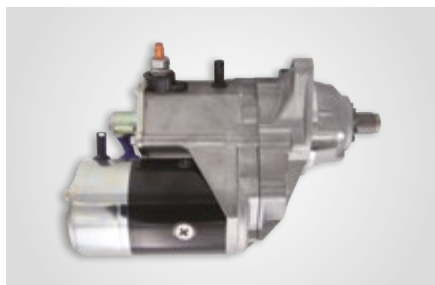
COD. 332000 **STARTER** **24V / 5,5KW / N°TEETH 10**

- ▲ OE IVECO: 5801710983, 42498115, 2995988
- ▲ Applications: IVECO Stralis, Trakker
- ▲ Engine types: F3AE0681, F3BE0681



COD. 332001 **STARTER** **24V / 4,5KW / N°TEETH 10**

- ▲ OE FIAT: 99432760
- ▲ Applications: IVECO Stralis, Trakker
- ▲ Engine types: F2BE0642, F2BE0681, F2BE3681



COD. 332024 **STARTER** **12V / 2,5KW / N°TEETH 9**

- ▲ OE IVECO: 69502571, 504201467, 504086888
- ▲ Applications: IVECO Daily
- ▲ Engine types: F1AE0481, F1AE3481, F1CE0441



ALTERNATORS

- ▲ Wide range for the Italian fleet.
Constantly expanding the foreign range.



The **alternator** is an electromechanical machine able to guarantee energy to the system and to the battery, thanks to the transformation of mechanical energy into electrical energy.

COD. 430730
ALTERNATOR 28V / 70A

- ▲ OE IVECO: 4892318
- ▲ Applications: IVECO EuroCargo
- ▲ Engine types: F4AE0481, F4AE0681, F4AE3481

COD. 430270
ALTERNATOR 28V / 55A

- ▲ OE IVECO: 98419035, 4757192, 61146542
- ▲ Applications: IVECO Zeta, Turbostar, EuroCargo
- ▲ Engine types: 8040.05, 8060.05, 8210.42



COD. 432027M
ALTERNATOR 14V / 90A

- ▲ OE IVECO: 500317453, 99463372
- ▲ Applications: IVECO Daily
- ▲ Engine types: 8140.43B, 8140.43S, 8149.03



EGR MODULES AND VALVES

▲ The focus on reducing emissions from the latest generation vehicles.



The **EGR valve** (Exhaust Gas Recirculation) is the main driver of the exhaust gas recirculation system. This system, by valve, ducts and radiators, is responsible for re-circulating a small part of the exhaust gases in order to reduce emissions.

COD. 940884 **EGR VALVE**

- ▲ OE IVECO: 504317811
- ▲ Applications: IVECO Daily
- ▲ Engine types: F1CE3481, F1CFL411

COD. 942170 **EGR COOLER**

- ▲ OE IVECO: 504178568, 504158592
- ▲ Applications: IVECO Daily
- ▲ Engine types: F1AE0481



COD. 946160 **EGR VALVE**

- ▲ OE IVECO: 504036829
- ▲ Applications: FIAT Ducato, IVECO Daily
- ▲ Engine types: F1AE0481



THROTTLE BODIES

▲ Components of the power supply system.



Mechanical and electrical throttle bodies regulate and optimize the engine idling speed. Along a main shaft, that is able to connect the inside of the heating unit with the external environment through the intake system, there is a throttle body, which regulates the flow of air inside the shaft.

COD. 677000 **THROTTLE BODY**

- ▲ OE HYUNDAI: 3510027410
- ▲ Applications: KIA Sportage, HYUNDAI Tucson
- ▲ Engine types: D4EA, D4HA

COD. 670610 **THROTTLE BODY**

- ▲ OE IVECO: 504134412
- ▲ Applications: FIAT Ducato
- ▲ Engine types: F1CE0441, F1CFA401



COD. 947800 **THROTTLE BODY**

- ▲ OE IVECO: 5801727743, 504385629
- ▲ Applications: FIAT Ducato, IVECO Daily
- ▲ Engine types: F1AE3481, F1AE3481, F1AFL411



FUEL FEED UNITS

▲ Over 100 catalogue references of the main European applications.



The fuel feed unit sees the main part in the electrical suction pump; its function is to aspire the fuel from the tank.

COD. 340803 **FUEL FEED UNIT**

- ▲ OE FIAT: 1368151080, 1348741080
- ▲ Applications: FIAT Ducato
- ▲ Engine types: F1AE0481, F1CE0481

COD. 340800 **FUEL FEED UNIT**

- ▲ OE IVECO: 69503526, 580203046
- ▲ Applications: IVECO Daily
- ▲ Engine types: F1AE0481, F1CE0481, F4AE0681



COD. 7350071 **FUEL FEED UNIT**

- ▲ OE FORD: 6C11-9275-AC, 6C11-9275-AB
- ▲ Applications: FORD Transit
- ▲ Engine types: H9FB, PGFA, QVFA



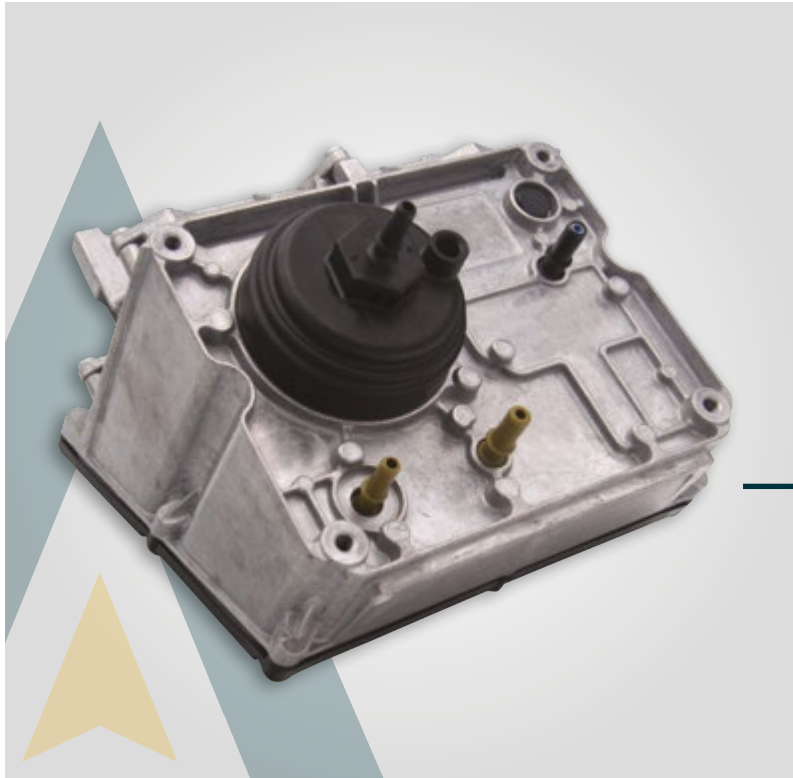
COD. 7350074 **FUEL FEED UNIT**

- ▲ OE IVECO: 69503676
- ▲ Applications: IVECO Daily
- ▲ Engine types: F1CE3481



DENOX

▲ Emission controllers.



Denox is a system of *selective catalytic reduction* applied to minimize exhaust emissions of nitrogen oxides (NOx), responding to the requirements of the anti-pollution directives. Unlike applications on large systems, the reducing agent used for the chemical reaction is a specific product called **AdBlue**, a solution of urea and demineralized water.

COD. 340650 **ADBLUE INJECTION PUMP**

- ▲ OE IVECO: 504365261, 504193263, 504145103
- ▲ Applications: IVECO Stralis, Trakker
- ▲ Engine types: F2BE0681, F2BE3681, F3AE3681

COD. 340760 **ADBLUE DOSING MODULE**

- ▲ OE IVECO: 504365576, 8046503, 8047374
- ▲ Applications: IVECO Stralis, Trakker
- ▲ Engine types: F2BE0681, F2BE3681, F3HFE611



COD. 900590 **ADBLUE SENSOR**

- ▲ OE IVECO: 5801754016, 5801443021, 41271167
- ▲ Applications: IVECO EuroCargo
- ▲ Engine types: F4AE3681



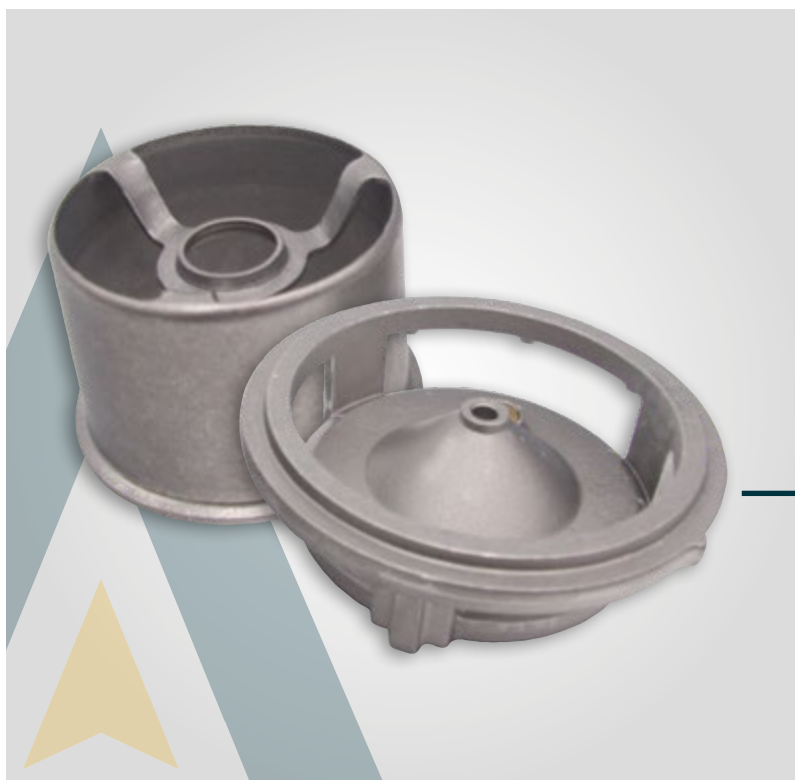
COD. 710600 **ADBLUE INJECTION PUMP**

- ▲ OE IVECO: 504381868
- ▲ Applications: IVECO Stralis
- ▲ Engine types: F2BE0682, F4AFE411



THERMOSTATS

▲ Expanding range.



The **thermostat** regulates the temperature of the cooling circuit between the engine and the radiator.

The valve remains closed in the heating phase and subsequently it modulates the emission of water to keep the optimal temperature inside the engine.

COD. 930100 **THERMOSTAT BODY**

- ▲ OE FIAT: 504263917, 504215464
- ▲ Applications: IVECO Stralis
- ▲ Engine types: F3AE0681, F3BE0681

COD. 590410 **THERMOSTAT BODY**

- ▲ OE IVECO: 504387382, 504110432
- ▲ Applications: IVECO Daily, FIAT Ducato
- ▲ Engine types: F1AE0481, F1AE3481, F1AGL411



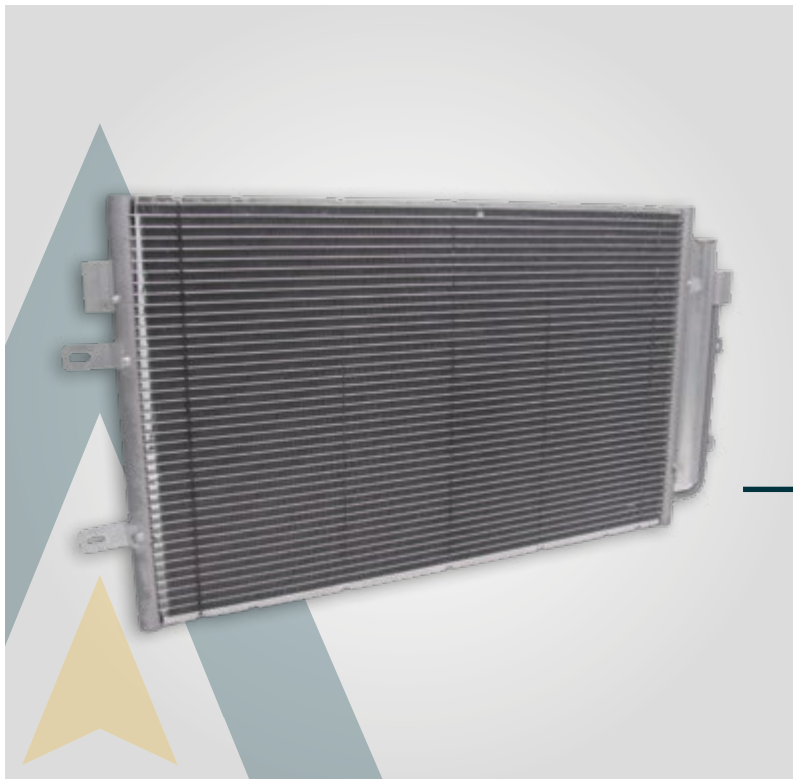
COD. 930050 **THERMOSTAT**

- ▲ OE MAN: 81.06401-0045, 81.06401-0038
- ▲ Applications: MAN
- ▲ Engine types: D0826, D2566, D2865, D2866



THERMAL SYSTEM

▲ The evolution of thermal spare parts.



The vehicle air-conditioning spare parts include cooling and ventilation systems, heat exchangers, radiators and condensers.

COD. 700090 **CLIMA CONDENSER**

- ▲ OE IVECO: 5801255825
- ▲ Applications: IVECO Daily
- ▲ Engine types: F1AE3481

COD. 703011 **HEATER KIT 24V**

- ▲ OE IVECO: 42553953
- ▲ Applications: IVECO Stralis
- ▲ Engine types: F2BE0681, F3AE0681, F3AE3681, F3BE0681, F3BE3681



COD. 703015 **HEATER KIT 24V**

- ▲ OE IVECO: 504268419, 98418120
- ▲ Applications: IVECO EuroCargo
- ▲ Engine types: 8040.25X, 8060.25R, 8060.45R



AIR FLOW SENSORS

▲ The latest arrivals in Blinken catalogue.



The **air flow sensor** is a flowmeter that measures intake air mass, speed and temperature, changing the air/fuel ratio. Thanks to this sensor it is possible to influence consumption and emissions.

COD. 945025 **AIR MASS METER**

- ▲ OE IVECO: 69503670, 500026735, 51827033
- ▲ Applications: FIAT Ducato, IVECO Daily
- ▲ Engine types: F1AE0481, F1AGL411, F1CE0441

COD. 7370007 **AIR MASS METER**

- ▲ OE FIAT: 51782034, 71789484, 71793250
- ▲ Applications: FIAT Doblò, 500, Panda, Grande Punto
- ▲ Engine types: 192 A1.000, 199 A2.000, 330 A1.000



COD. 7370474 **AIR MASS METER**

- ▲ OE FIAT: 51782035, 55206758, 55206759
- ▲ Applications: FIAT Doblò, 500, Panda, Grande Punto
- ▲ Engine types: 169 A1.000, 198 A2.000, 844 A2.000



SENSORS

▲ An extended range steadily increasing.



Sensors of temperature, fuel pressure, exhaust gas, speed, crankshaft, camshaft position, fuel level take part of this family.

COD. 941300 **OIL SWITCH**

- ▲ OE IVECO: 500042804, 5001018865, 504084761
- ▲ Applications: IVECO Stralis, EuroCargo
- ▲ Engine types: F2BE0681, F2BE1682, F3AE0681

COD. 945000 **REVS SENSOR**

- ▲ OE IVECO: 99450797
- ▲ Applications: IVECO Stralis, Trakker
- ▲ Engine types: F2BE0641, F2BE0681, F2BE3681



COD. 941060 **OIL TEMPERATURE SENSOR**

- ▲ OE IVECO: 504358206, 4890193
- ▲ Applications: IVECO Stralis, Trakker, EuroCargo
- ▲ Engine types: F2BE3681, F3AE3681, F3B3681, F4AE0481



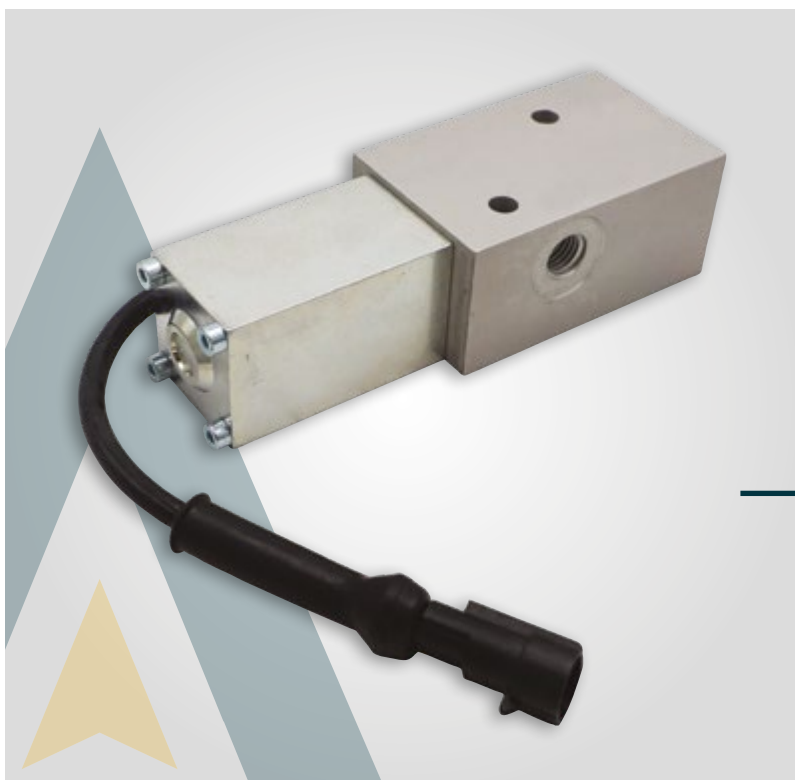
COD. 942460 **TURBINE SENSOR**

- ▲ OE IVECO: 500377533
- ▲ Applications: IVECO Stralis, Astra
- ▲ Engine types: F2BE0682, F2BE0681, F3AE0681



ELECTRICAL COMPONENTS

▲ A wide selection of different electrical spare parts.



The electrical components product family includes steering column switches, steering locks, intake manifolds, switches and electrical cables, ignition coils and much more.

COD. 941618 **WASTEGATE VALVE EURO 2/3**

- ▲ OE IVECO: 504203275, 504013790
- ▲ Applications: IVECO Stralis
- ▲ Engine types: F2BE0681, F3AE0681, F3BE0681

COD. 900970 **STEERING LOCK**

- ▲ OE IVECO: 2992551, 2991727
- ▲ Applications: IVECO Daily, FIAT Ducato
- ▲ Engine types: F1AE0481, 8140.43B, 8149.03

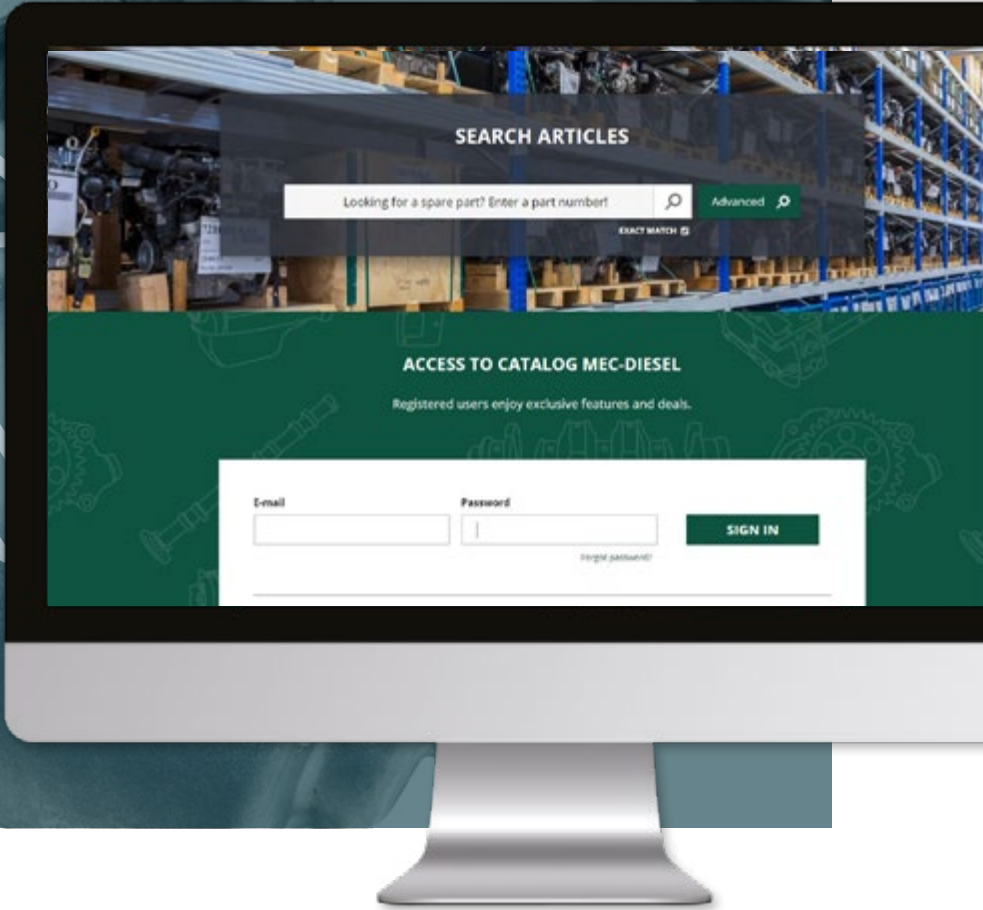


COD. 940980 **WINDOW REGULATOR**

- ▲ OE IVECO: 2997196, 504040989, 99487781
- ▲ Applications: IVECO Stralis, Trakker, EuroCargo
- ▲ Engine types: F2BE0641, F3AE0681, F4AE3681



Blinken products
are available on our
e-commerce:
webshop.mecdiesel.it



Follow us on Mec-Diesel social network!



Blinken is a **Mec-Diesel S.p.A.** brand

Via Sestriere, 3 - 10060
Candiolo (Torino) - Italy

T: +39 0113972132
F: +39 0113971342

blinken@meccdiesel.it
www.blinken.it